



SAME DAY TEETH²

We combine teamwork, comprehensive treatment planning and meticulous preparation – enabling us to position arches of non-removable teeth on the same day as implant placement. This means you won't be troubled by loose and uncomfortable dentures. Instead, you can benefit from the closest thing to healthy natural looking teeth right away.

We offer the widest range of proven advanced implant solutions for the recreation of lost arches of teeth. By combining extensive diagnostics, comprehensive treatment planning, teamwork and precision guided surgery we can meet every patient's needs.

Option 1: Fixed arch of teeth – 'the third dentition'

This full arch of teeth is made up of four to six implants placed in either arch. We then attach a titanium framework with an acrylic gum veneer, along with a complete arch of true to life composite teeth. This prosthesis feels and looks like a natural arch of teeth.

Same Day Teeth – immediate loading

'Loading' means the attachment of your chosen prosthesis to your dental implants. For many people, it is entirely possible to attach a provisional, non-removable acrylic bridge on the same day as implant placement. This is especially important for those patients facing the imminent loss of their remaining teeth. The procedure requires extensive planning, more surgery time and close collaboration by the Same Day Teeth team.

Same Day Teeth – delayed load

Although many of our patients have suffered both the emotional and functional issues of total tooth loss for many years, they may not expect or require the immediate attachment of their teeth. Instead they wear their complete dentures as normal during a 90-day healing and integration phase. After this, treatment continues for the recreation of an arch of replacement fixed teeth.

Option 2: Fixed/removable denture

A substitute to implant assisted dentures. By contrast, this prosthesis is firmly secured by four implants (minimum) in either the upper or lower jaws, combined with a precision milled titanium bar. This design has the benefit of enabling you to experience a retentive and stable prosthesis that feels just like fixed teeth.

Option 3: Implant assisted complete denture

A removable complete denture that is assisted by precision attachments located at the head of two or more implants. This solution can be used in either the upper or lower jaw. The tissues of the mouth also provide some support to the complete denture.

Decisive factors for the above solutions include your age, health, expectations and the amount of missing hard and soft tissue, your dexterity and your financial situation.

Preparation is key. Before we get to the surgery stage, we plan your treatment in meticulous detail.

- We use the latest 3-dimensional scanning technology to create a digital image that guides identification of the ideal implant locations
- We produce physical models of the human jaws, which later help our Dentists carry out precision, minimally invasive implant placement

STAGES OF TREATMENT

Below is an outline of the main treatment stages. In between stages 4 and 5 you will be required to attend 3-5 appointments for approx. 30-45 minutes each.

Stage one

When you come for your initial consultation with us, we will assess your suitability for treatment and you'll begin to understand the difference this treatment could make to your life. We encourage you to ask as many questions as you need to. At your first appointment we will conduct an oral examination to ensure that conditions for implant treatment have been met and to determine the best solution for you. If you decide you wish to proceed, you move to stage two.



Full mouth x ray taken as part of the consultation process of teeth above

Stage two

Following the initial consultation you will undergo diagnostics and a CT scan so we can prepare an extremely predictable and accurate 3D digital image of the entire procedure, complete with virtual implant placement. All this information helps to determine the final treatment plan. This appointment takes approximately one hour. Then we will spend up to two weeks formulating your customised plan before we see you again for stage three.

Stage three

We chat with you face to face, so we can present your options, including details of the fees. At this time we can also discuss our full range of financial payment plans. We can then schedule your Same Day Teeth treatment and book the appointments. When you have decided to go ahead with treatment, you will come in for your first appointment. Depending on your situation, this could involve impressions of your mouth, recordings of your bite and the choice of the size, shape and colour of your new teeth. Some patients are able to have a trial fitting of their new teeth whilst others are not. It just depends on your individual situation.

Stage four

We normally schedule the surgery to begin early morning and the procedure is often carried out under sedation. The jaw is prepared for the implants to be placed and these are carefully positioned to secure the new teeth. The new teeth have already been made prior to this appointment and are then adapted to fit over the implants. Once finalized, the new fully fixed replacement teeth are fitted. After this, we give you some necessary time to rest in our relaxation area. Within just a few hours you will be able to go home with your brand new smile.

Stage five

Post procedure reviews

An initial review appointment is scheduled for one week following the surgery. This is to check you are comfortable and that everything is healing and progressing the way it should. You will also need to see one of our hygienists and they will advise you on the best way to look after your new teeth. After this, we ask to see you a couple more times to monitor your progress and after three months we can begin treatment for your final permanent teeth, over 3-4 short appointments. Adjustments of the tooth position and colour can be made at this stage.

Receive your permanent teeth

Your new, permanent, fully fixed replacement teeth are fitted. Your new teeth are rock-solid and as beautiful as natural teeth. Detailed instructions are given on how to look after and maintain your new teeth.

Advantages:

- Avoids the need for removable dentures
- Delivers fully fixed functional teeth
- Often avoids the need for grafting procedures
- Reduced treatment times
- New teeth in just one day
- High success rate

THE CONCEPT

This advanced technique reduces the number of dental implants required to restore an entire arch of teeth, and enables permanent teeth to be fitted to dental implants on the same day of implant placement.

The science behind the smile

With the Same Day Teeth concept, it is possible to achieve a new smile and a bite comparable to natural teeth in just one day. The technique was originally developed for patients who had experienced total tooth loss, offering them an efficient treatment concept using only four dental implants to support a full arch of teeth. Before this treatment became available, traditional, whole arch dental implant procedures used between 6 and 10 dental implants and required a lengthy healing period before the bridge could be fitted to the implants. Placement tended to require extensive bone grafting. The fixed same day teeth solution differs because it enables you to have a complete arch of new teeth in a single day, using just four implants.

Many of the fixed teeth systems used today have their origins in the All-on-4™ technique pioneered by Portuguese Dentist, Dr. Paulo Malo. This enabled patients to have a fixed bridge placed quickly, using the minimum amount of dental implants and avoiding the need for extensive bone grafts. The protocol has become a popular procedure worldwide and has influenced the development of many other systems, all with their own merits.

The position and configuration of the implants in the jawbone, combined with the permanent bridge, aids the distribution of the chewing forces passed on to the jawbone from the teeth. Two of the implants are often tilted up to 45 degrees at the back of the jaw, meaning less jaw bone is required. The other two are placed vertically at the front of the jawbone.

There are many different names given to this technique, including:

- Same Day Smile
- All-on-4™
- Permanent teeth in a day
- Fast and Fixed

Patients who chose fixed teeth reported the following advantages:

- The full arch of teeth can be cared for and cleaned just like natural teeth. The arch of teeth cannot be removed, so there is no need to remove a denture after meals
- The full arch of permanent teeth feels just like your natural teeth
- You can taste your food more, as the full arch of upper teeth does not cover the roof of your mouth
- You can chew and bite food how you like and you can choose to eat the foods you previously could not, experiencing a more varied diet for healthier living
- It is a long term solution and will last for decades or a person's lifetime if looked after correctly

Same Day Teeth – immediate loading

'Loading' means the attachment of your chosen bridge of teeth to your dental implants. For many people it is entirely possible to attach a provisional, non-removable acrylic bridge on the same day as implant placement. This is especially important for those patients facing the imminent loss of their remaining teeth. The procedure requires extensive planning, more surgery time and close collaboration by the Same Day Teeth team.

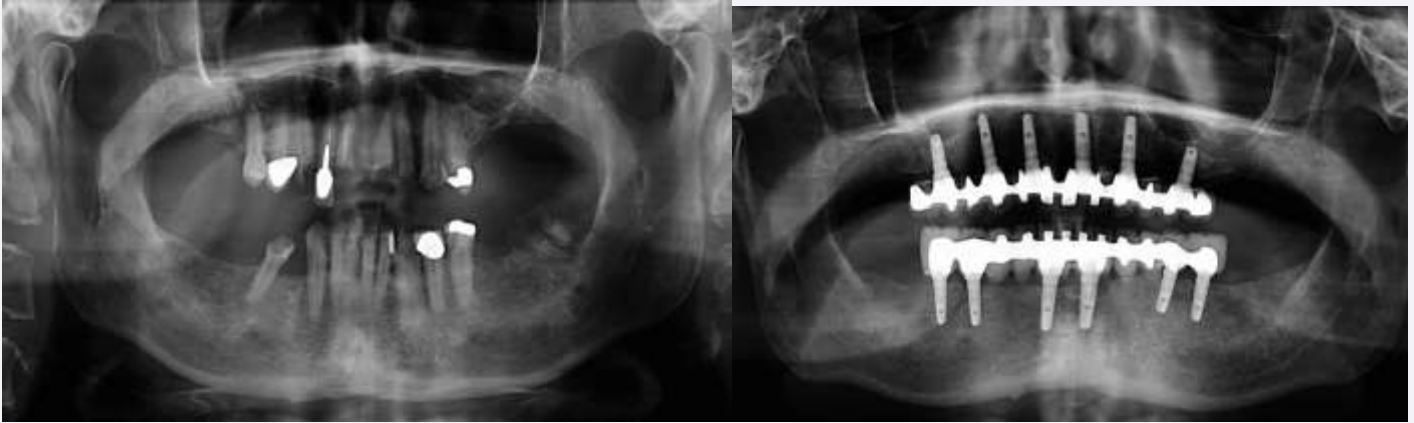
Same Day Teeth – delayed load

Although many of our patients have suffered both the emotional and functional issues of total tooth loss for many years, they may not expect or require the immediate attachment of their teeth. Instead they wear their complete dentures as normal during a 90-day healing and integration phase. After this, treatment continues and we create an arch of replacement fixed teeth.



Broken down teeth with decay and advanced gum disease

Permanent teeth fixed directly to implants with no need for bulky gum work or a plastic palate that covers the roof of the mouth



Full mouth x ray taken after removal of teeth with dental implants and fixed teeth in place

Full mouth x ray taken after removal of teeth with dental implants and fixed teeth in place

IMPLANT ASSISTED SOLUTIONS

What if I am not suitable for fixed teeth?

Decisive factors for whether you are a candidate for our Same Day Teeth procedure include your age, health, expectations, the amount of missing hard and soft tissue, your dexterity and your financial situation. If unfortunately these criteria mean that you aren't suitable for the same day procedure, then we can offer you other implant assisted treatments that are worth the wait, ensuring we help you get back the quality of life you deserve.

Option 1: Implant assisted complete denture

A complete, removable denture anchored by precision attachments to a minimum of two implants. This option can either be used in the upper or lower jaw. Oral tissue in the mouth also provides a little support to the denture.

Option 2: Fixed/removable denture

This works as an alternative solution to the implant assisted complete denture. This prosthesis is firmly secured by as little as four implants the upper or lower jaw, together with a precision milled titanium bar. This option has the benefit of enabling you to have a retentive and stable prosthesis that is just like fixed teeth.



Before

After

Upper full denture with plastic palate removed with four Locator attachments positioned to anchor the denture firmly in place



Locator abutments arranged in the upper jaw ready for the full denture to be attached

Lower full denture with 4 Locator attachments that anchor a less bulky and comfortable lower denture in place

Locator abutments arranged in the lower jaw ready for the full denture to be attached

ALTERNATIVE TREATMENTS

What if I am not suitable for fixed teeth?

Decisive factors for whether you are a candidate for our Same Day Teeth procedure include your age, health, expectations, the amount of missing hard and soft tissue, your dexterity and your financial situation. If unfortunately these criteria mean that you aren't suitable for the same day procedure, then we can offer you other implant assisted treatments that are worth the wait, ensuring we help you get back the quality of life you deserve.

Option 1: Implant assisted complete denture

A complete, removable denture anchored by precision attachments to a minimum of two implants. This option can either be used in the upper or lower jaw. Oral tissue in the mouth also provides a little support to the denture.

Option 2: Fixed/removable denture

This works as an alternative solution to the implant assisted complete denture. This prosthesis is firmly secured by as little as four implants the upper or lower jaw, together with a precision milled titanium bar. This option has the benefit of enabling you to have a retentive and stable prosthesis that is just like fixed teeth.



Before



After



Upper full denture with plastic palate removed with four Locator attachments positioned to anchor the denture firmly in place

Locator abutments arranged in the upper jaw ready for the full denture to be attached

Immediate Dentures

Immediate placement of implants may not be possible for some patients, due to very poor oral health, tooth decay or gum disease. This will be identified during our skilled assessment of your teeth and gums along with careful pre surgical planning. In most cases you will still be able to have implants, and for the 8-12 week period prior to implant placement we can fit you with a set of immediate or provisional dentures.

Rest assured you would be in the skilled hands with our industry leading Dental Technicians and Clinical Dental Technicians who are on hand to make this transition as comfortable as possible.

During this time:

- Be confident with the best dentures and techniques available
- Look better than before with the most natural looking teeth
- Any discomfort minimised using the best techniques
- Work directly with your Clinical Dental Technician to achieve the smile you've dreamed of
- See how your new teeth look before they are attached the same day as your implant placement

No More Waiting for 3-6 months for Implant Treatment

1. If you ever had a tooth out and a plastic denture made recently and you would like to have a fixed tooth, this can now be done in one day. You do not need to wait for 3-6 months which is the usual time period.

The Advantages over the Conventional Techniques are

1. Your smile or missing tooth is restored on the same day (not months later)
2. You never have to wear a temporary bridge or use an unsightly denture as a temporary plate
3. Only one to two visits to the dentist required
4. Micro surgery (little discomfort or pain)
5. Short healing time of Dental implants and gum tissue
6. This technique has been applied from 1 dental Implant up to multiple Dental Implants on a single sitting

Steps Involved in '1 Day' Multiple Dental Implant Placement

1. An initial Consultation (with X-rays) to discuss your requirements
2. Treatment of tooth decay or gum problems prior to Implantation
3. Replacement of missing teeth, denture or broken tooth with fixed Dental Implant Supported Temporary Crowns(Implant, Supporting Post and temporary Crown all fitted in 1 Day!)
4. Healing period required between 2-4 months
5. During which time the final Dental Crown will be tailor designed by a dental laboratory to the exact colour, shape, size and form of the patient's natural teeth
6. At the third visit (in 2-4 months) an impression is taken of the dental Implants in your mouth which are used to make your final Dental Crowns

Is this You?

- Do you have a missing tooth?
- Do you have many missing or failing teeth?
- Are you extreme embarrassed about your smile?
- Do you want expert advice and options that are affordable for you?
- Do you want to see a dentist who is caring, understanding and who actually listens?
- Do you want to change your smile and confidence beyond your imagination?