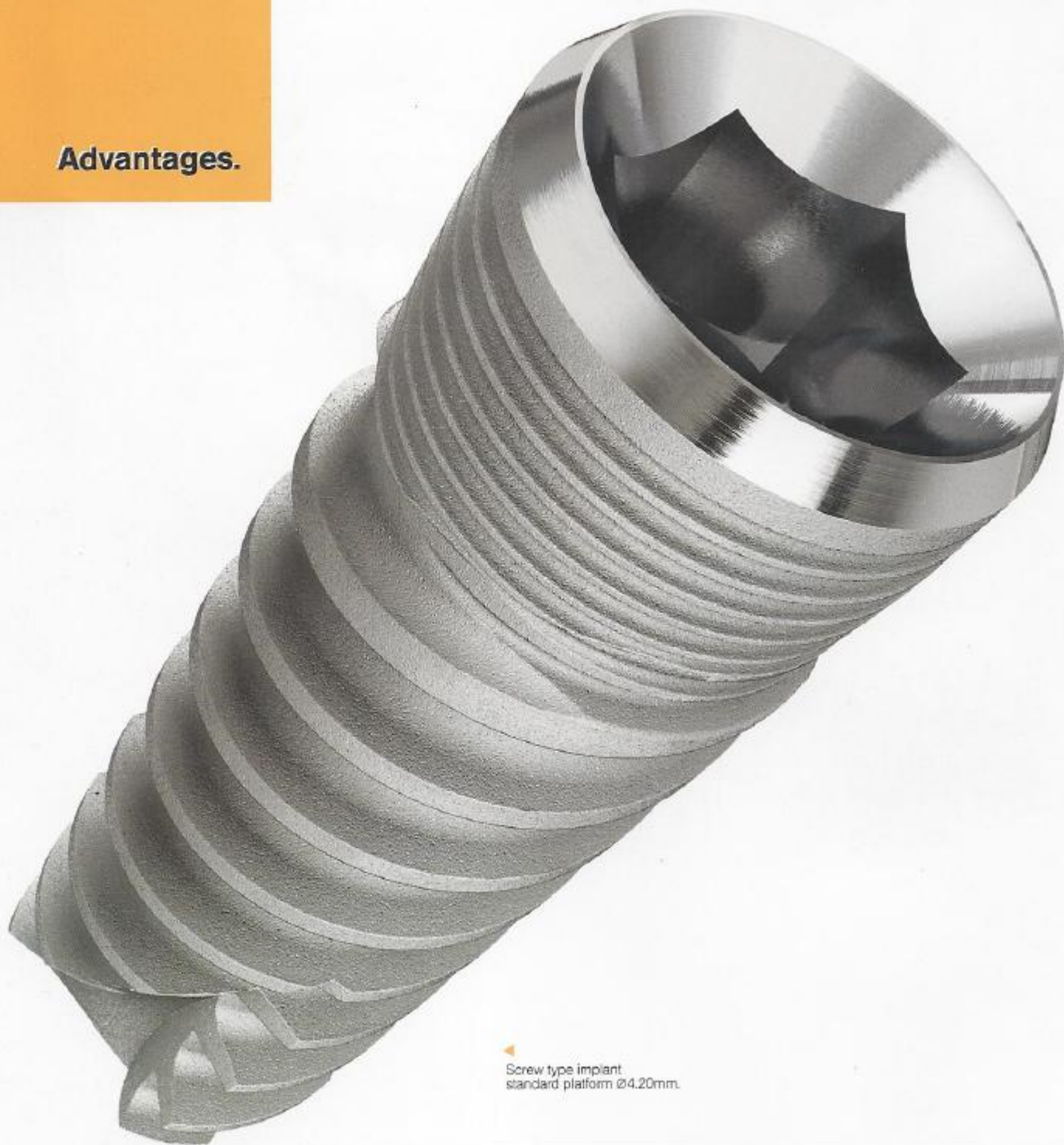


IMPLANTS

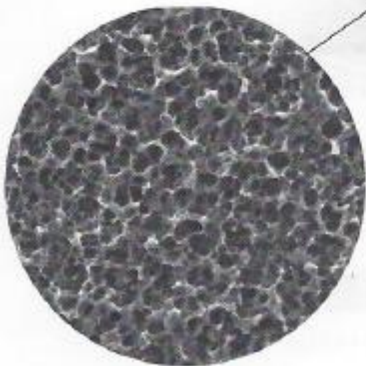
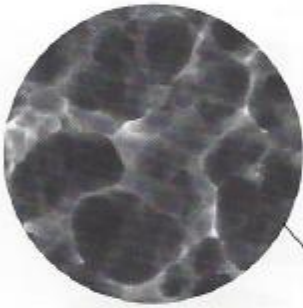
Advantages.



Screw type implant
standard platform $\varnothing 4.20\text{mm}$.

Success.

SEVEN implants' high success rate is guaranteed by a combination of advanced geometric design and a cutting-edge surface technology.



Micro Structure - Surface Morphology

The surface roughness and microgeometry is achieved by blasting particles and acid-etching. As a result, a larger surface area increases bone-to-implant contact, for long lasting osseointegration. The micro mechanical fixation increases implant stability.

The graphic features a dense, repeating pattern of interlocking gears and mechanical components in shades of grey and blue. A large white circle is centered in the upper half of the image, containing text. The title 'MECHANICAL STABILITY' is written in a white, sans-serif font, following the curve of the top edge of the white circle.

MECHANICAL STABILITY

Thanks to a unique drilling methodology, the implant's geometric design enables a moderate compression of the bone at the top 2/3 of its body. This compression, enabled by a distinctive conical shaped final drill, provides an immediate and prolonged mechanical primary stability.

The graphic features a dense, repeating pattern of bright green leaves, similar to a lemon tree, filling the background. A large white circle is centered in the upper half of the image, containing text. The title 'BIOLOGICAL STABILITY' is written in a white, sans-serif font, following the curve of the top edge of the white circle.

BIOLOGICAL STABILITY

An enhanced secondary biological stability is achieved by integration of the implant's geometry, morphology and a differential drilling approach. The compartments formed between the implant's threads at the bottom 1/3 of the cavity generate an ideal habitat for sustainable bone growth leading to an accelerated osseointegration.

Success.

A high success rate is achieved through a combination of advanced geometric design and our well established surface morphology.



Micro Structure - Surface Morphology

The surface roughness and microgeometry is achieved by sand blasting and acid-etching. A larger surface area increases bone-to-implant contact (BIC), resulting in a long term clinical success.



Another possibility of restoring a full dentition with four implants. The restoration is achieved with a "Dolder bar" connection which is also adaptable, enabling you to maintain effective oral hygiene.

4 Full denture supported by dolder bar insert.



Full denture, lower jaw



Installing full denture with "Dolder bar"



Dolder bar restoration and final result

What Will Happen ?

Millions of dental implants are placed every year worldwide. They have become the most successful prosthetic device and are improving the lives of people every day. The procedure can be done in your own dentist's office, or with one of their colleagues. A careful diet and avoidance of strenuous activity is required for only a few days, after which most patients can return to normal activities. Once the implants have bonded securely, the permanent crown or denture can be attached. After that, you can return to your normal tooth care such as brushing, flossing, and regular checkups. With correct care your implants will last for life.

Benefits of Implants:

- Aesthetic
- Permanent and reliable
- More comfortable
- Helps to maintain healthy jaw
- Saves our really healthy teeth
- Economical

How would you like new teeth that are permanent, reliable, and economical ?

With MIS Implants each implant will last a lifetime so you can avoid the inconveniences of dentures, partials and bridges.

Dental implants are often no more expensive than the alternative treatments. When you consider the time spent to adjust dentures or the damage done to neighboring teeth by bridges, you will find that implants give the best value and are the healthiest restoration procedures.

www.mis-implants.com



ISO 9001:2000, ISO 14001:2008
FDA Cleared for marketing

© MIS Corporation. All rights reserved.



Smile, laugh, and eat... implants can make it happen



- Are you:**
- Missing one or more teeth ?
 - Having trouble with dentures or partials ?
 - Unhappy with your bridge ?

Dental implants will keep you smiling for life. Implants are replacement teeth that look and feel just like your own. You will eat and drink whatever you like without the inconveniences of unretained dentures, partials and missing teeth. Best of all, the implants look and feel like real teeth for a flawless, natural smile.

Are Dental Implants For You ?
Dental implants are the preferred treatment to replace missing teeth and to support a full or partial denture. Hundreds of thousands of people all over the world are using MIS dental implants to perfect their smile and restore their confidence. Your dentist can help you determine if implants are the right choice for you.



If you need to replace just one tooth, an implant may be a more effective alternative to traditional bridge work. A standard bridge is built on both neighboring teeth to support the new bridge. With ongoing bone loss under the bridge the supporting teeth eventually become loose and fall. Alternatively, a dental implant replaces only the missing tooth while preserving bone, giving longer healthier life to the neighboring teeth.

1. Replacing a single tooth.



Single tooth missing



Replacement of single tooth



Single tooth replacement final result



Multiple dental implants support a partial or full denture eliminating the need for adhesives or metal clasps which can be uncomfortable. Additionally, implants help to keep your jaw healthy and to maintain your current facial appearance in the long term.

2. Replacing three teeth with a fixed partial denture.



Three teeth missing, upper jaw



Installing three dental implants



Fixed partial denture final result



Dental implants are the most effective way to support a full set of dentures. Priority fitting dentures select your setting as well as your speech and appearance. You can finally eat, laugh, and smile with confidence any situation. The denture will be attached to the implants to prevent the need for waxing and to ensure the comfort and durability of the denture.

3. Full denture supported by ball attachment insert.



Full denture, lower jaw



Installing full denture with "Ball attachment"



Full denture restoration final result