

CORONAVIRUS INFORMATION

DR I M SALEJEE



www.shutterstock.com · 1621031059

Coronavirus

What's in a name? A lot apparently:

'COVID-19'

- 'CO' stands for corona
- 'VI' for virus
- 'D' for disease
- '19' for 2019 - the year it was first identified

Source: World Health Organization



ALJAZEERA

CORONAVIRUS 2019 -NCOV

SYMPTOMS



FEVER



COUGH



SHORTNESS
OF BREATH



SORE THROAT



HEADACHE

www.shutterstock.com · 1646734249

COVID-19

How can you protect yourself?



Wash your hands
frequently and
thoroughly with soap
for at least 20 seconds



Cover face with a
tissue or your elbow
when coughing or
sneezing



Then throw
the tissue in a
waste bin



Maintain social
distancing



Avoid touching your
eyes, nose and
mouth

Source: WHO

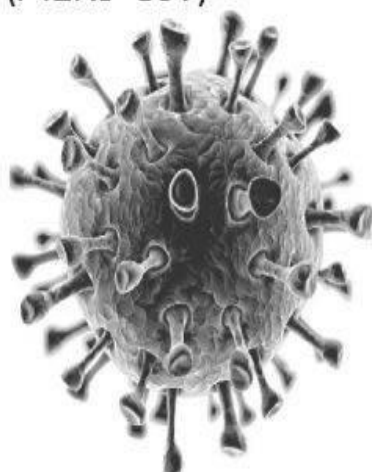
ALJAZEERA

Coronavirus

Large family of viruses that cause illness from the common cold to more severe diseases like MERS-CoV and SARS

Recent epidemics

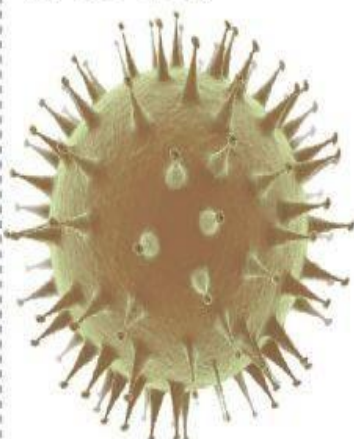
Middle East
Respiratory Syndrome
(MERS-CoV)



- First identified in Saudi Arabia in 2012
- Over 800 killed in Middle East since
- From dromedary camels to humans



Severe Acute
Respiratory Syndrome
(SARS-CoV)



- Identified in 2003, first infected humans in China in 2002
- Killed nearly 650 people in China/Hong Kong 2002-2003
- Thought to be from bats, spread to civet cats to humans



New strain

New China strain
SARS-like virus

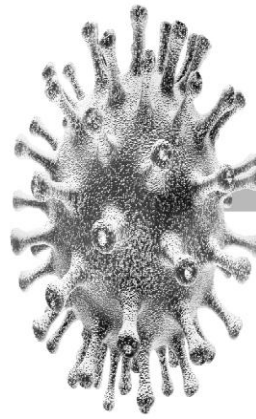
2019 novel
coronavirus
(2019-nCoV)

- First identified in late December 2019 in Wuhan, China
- Hundreds of cases detected in China, a number of deaths. Cases detected in Japan, Thailand, South Korea
- Seafood/animal market in Wuhan is centre of outbreak. Human-to-human transmission confirmed by Chinese authorities

CHINA

Coronaviruses

Coronaviruses are a large family of viruses that cause not only the common cold but also more serious respiratory illnesses

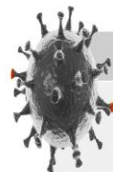


**2019-nCoV
OUTBREAK**
December 31, 2019

A novel coronavirus (2019-nCoV) was identified as the source of the illnesses on January 7, with the infection traced to a Wuhan seafood market that also sold live animals

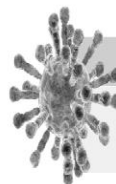
Symptoms

- Unknown incubation period
- Fever
- Difficult breathing
- Impaired liver and kidney function
- Kidney failure
- Severe cough
- Pneumonia



Middle East Respiratory Syndrome (MERS)

Identified in Saudi Arabia in 2012 - Spread to 27 countries. 2,494 confirmed cases | 858 deaths



Severe Acute Respiratory Syndrome (SARS)

Emerged in southern China in 2002 - Spread to 30 countries. 8,437 cases | 813 deaths



Source: Al Jazeera | Last updated: Jan 21, 2020

Coronavirus

Middle East Respiratory Syndrome (MERS) and Severe Acute Respiratory Syndrome (SARS) are viral respiratory illnesses caused by a coronavirus.

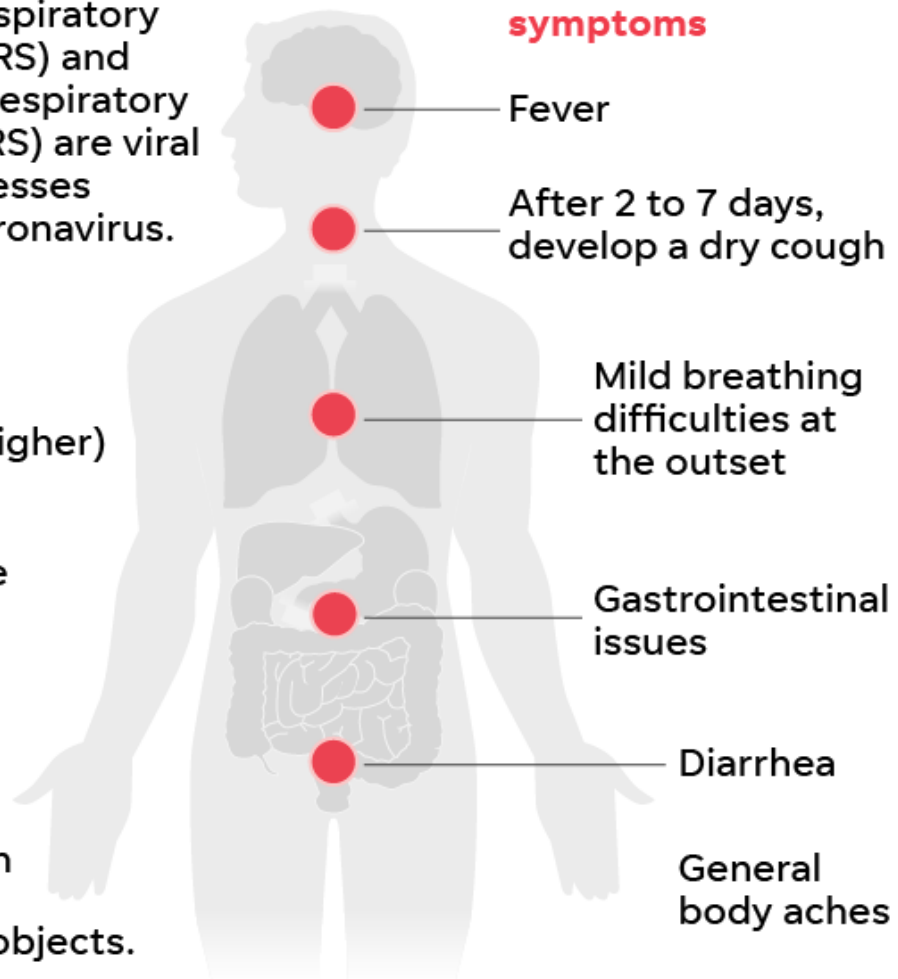
Severe symptoms

- High fever (100.4°F or higher)
- Pneumonia
- Kidney failure
- Death

Transmission

Coughs or sneezes from infected person or touching contaminated objects.

Common symptoms



Coronavirus: A Timeline



Protect yourself from 2019-nCoV



Cover your sneeze
and cough with a tissue



Wash your hand often



Avoid contact
with sick people

www.shutterstock.com · 1627607923



www.shutterstock.com · 1675978102

Asian coronavirus outbreak

Coronaviruses are a family of viruses common in animals, with the newest deadly strain (Novel Coronavirus) identified in Wuhan, China. Now there are reports of the virus in nearly a dozen countries including the U.S.



*Symptoms reported

Transmission

Coronaviruses are zoonotic, meaning they are transmitted between animals and people.

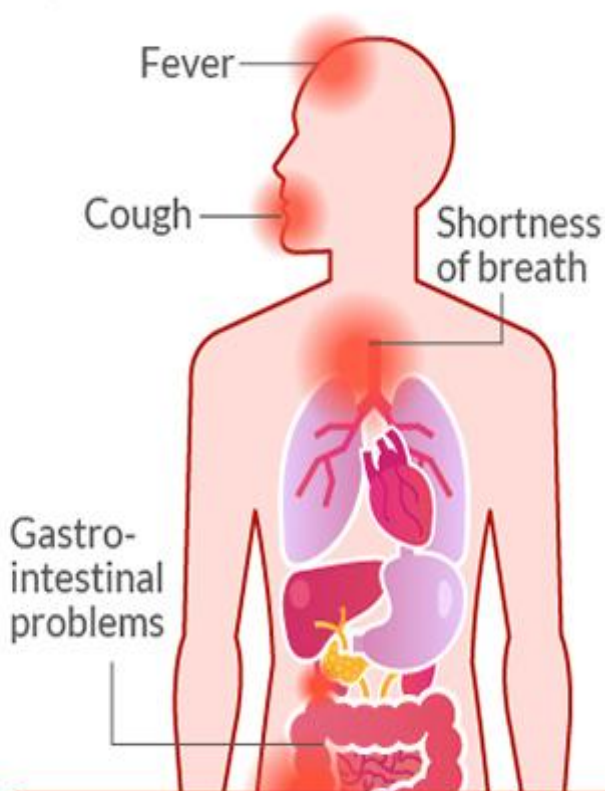


Human-to-human transmission:

Coronaviruses are most commonly spread from an infected person by:

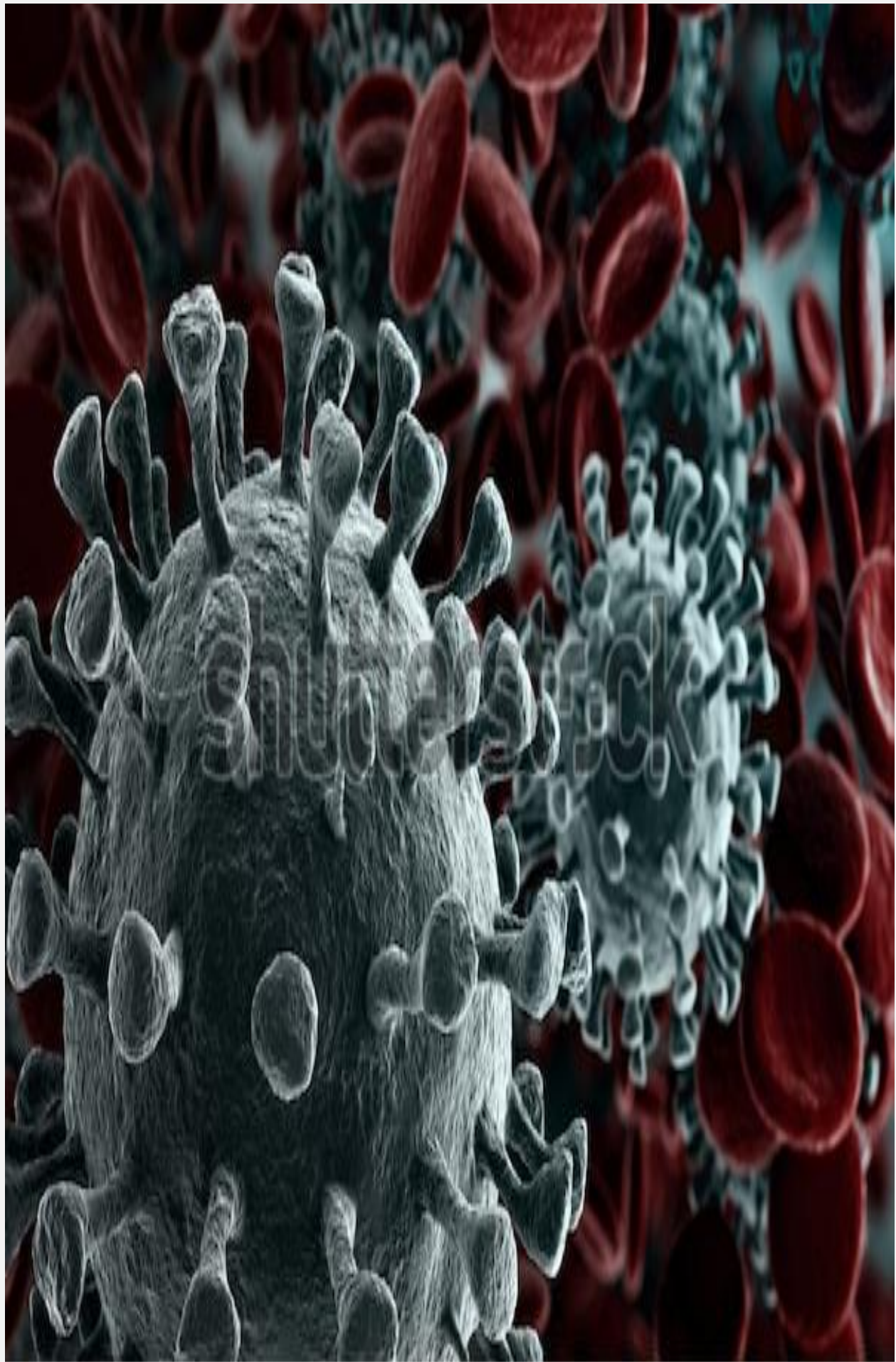
- Coughing and sneezing.
- Close personal contact, such as touching or shaking hands.
- Touching an object or surface with the virus on it, and then touching your mouth, nose, or eyes before washing your hands.
- Fecal contamination.

Signs of coronavirus infection



Severe cases

- Pneumonia
- Severe acute respiratory syndrome
- Kidney failure
- Death



www.shutterstock.com · 1625951248